

DF Direct 1.00

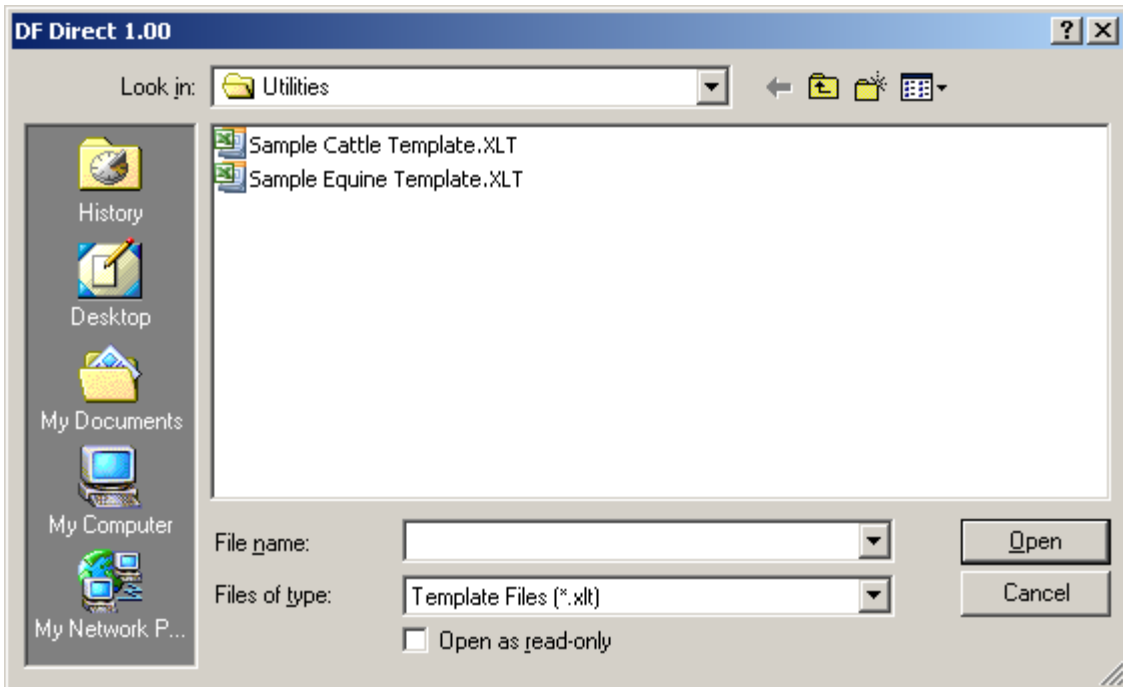
This is the menu you will get when starting the program.



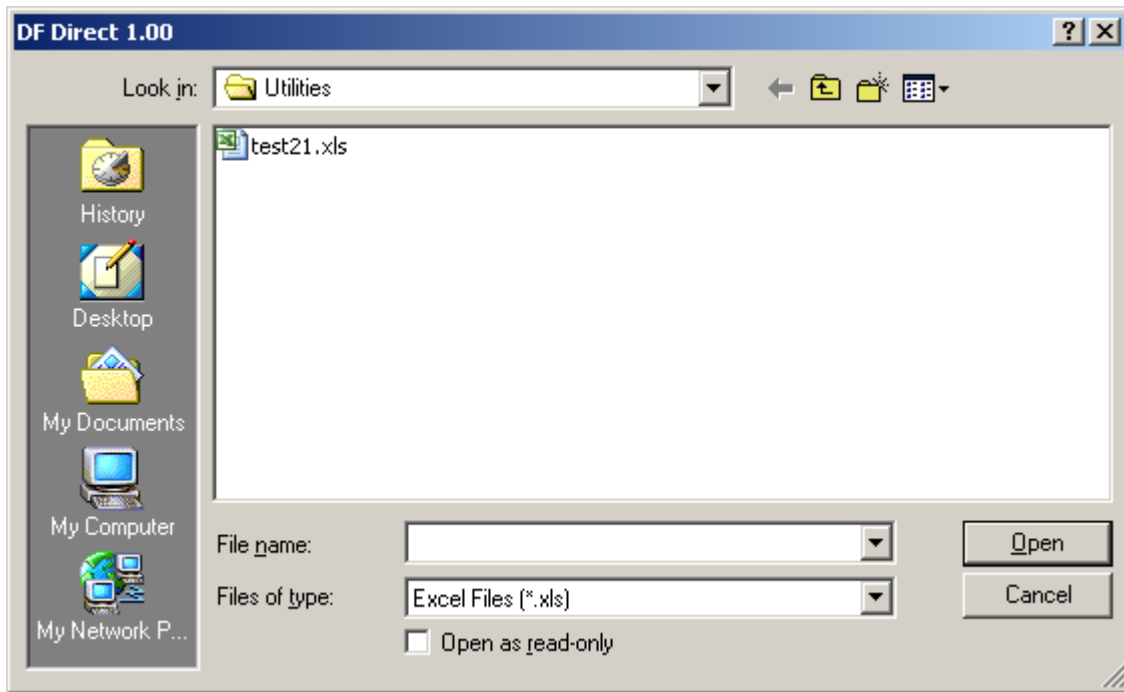
The “Open existing template” button will open a file selection menu. If there are existing template files, you can select the file that you wish to use as your template. The program will then start Excel with the selected template as your header, after which point you are ready to start scanning tags.

The “Create new template” button will start Excel in order to create a new template file. See instructions on header data for proper format. **This option will not scan tag data!**

The “Modify Template” button will give the same file selection menu. However, this option will start Excel after the file selection in order to edit the template and **will not scan in tag data.**



The “Append to existing spreadsheet” button will allow you to load an existing saved spreadsheet in order to append tag data to the file. You will get a file selection menu as follows. After the file is selected, Excel will load with the selected spreadsheet and you can then scan tags. **Note: this spreadsheet must have previously been created from a template file.**



Creating headers in template files

The Header must be on row 1 and start at column A. The following header data must not be repeated. Do not leave blank header columns between headers.

The options for the header are as follows: (Headers are not case sensitive)

RFID Number

If the header contains “RFID number”, the tag number will appear at this column.

If “RFID Number” is followed by a number (i.e. RFID Number 8), then the RFID number displayed will show that rightmost number of digits. For example, if the Header is “RFID Number 6”, and the number scanned is 985123456789012, then the spreadsheet will show 789012.

Count

If the header contains “Count”, then the sequential tag count will appear at this column.

IDate

If the header contains “IDate”, then the PC date will appear at this column. The header will display “Date”.

ITime

If the header contains “ITime”, then the PC time will appear at this column. The header will display “Time”.

EDate

If the header contains “EDate”, then the reader date will appear at this column. The header will display “Date”. Date and time stamp must be supported on the reader and must be turned on.

ETime

If the header contains “ETime”, then the reader time will appear at this column. The header will display “Time”. Date and time stamp must be supported on the reader and must be turned on.

Temp C

If the header contains “Temp C”, then the tag temperature in Celsius will appear at this column. The reader must have Biotherm enabled software and on the Brick and AXIZ SB-1 readers the temperature option must be enabled.

